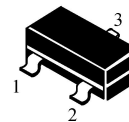


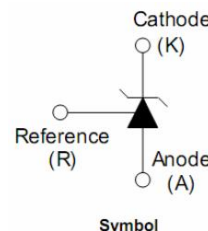
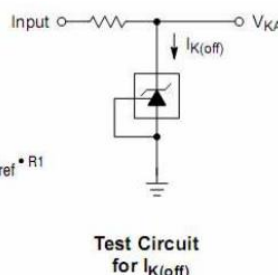
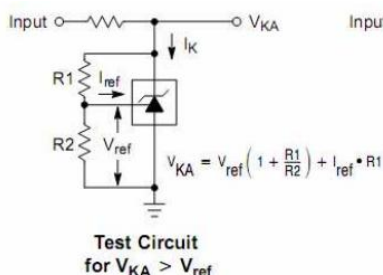
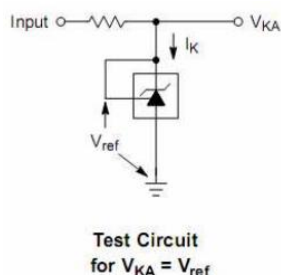
**SOT-23 Low Voltage Three Terminal Adjustable Regulator**  
**低压三端可调稳压 IC**

SOT-23

1. Reference
2. Cathode
3. Anode



■ **Features 特点**



■ **Absolute Maximum Ratings 最大额定值**

( $T_A=25^\circ\text{C}$  unless otherwise noted 如无特殊说明, 温度为  $25^\circ\text{C}$ )

| Characteristic 特性参数                      | Symbol 符号       | Rat 额定值                    | Unit 单位                   |
|--|-----------------|----------------------------|---------------------------|
| Cathode to Anode Voltage 阴极到阳极电压         | $V_{KA}$        | 20                         | V                         |
| Cathode Current Range 工作电流               | $I_K$           | 100                        | mA                        |
| Reference Input Current Range 输入电流       | $I_{REF}$       | 3                          | mA                        |
| Power dissipation 耗散功率                   | $P_D$           | 200                        | mW                        |
| Thermal Resistance Junction-Ambient 热阻   | $R_{\theta JA}$ | 625                        | $^\circ\text{C}/\text{W}$ |
| Solder Temperature 焊接温度/时间               | $T_d$           | 260/10                     | $^\circ\text{C}/\text{S}$ |
| Operating Ambient Temperature 工作温度       | $T_{op}$        | 0~70                       | $^\circ\text{C}$          |
| Junction and Storage Temperature 结温和储藏温度 | $T_J, T_{stg}$  | -40to+125 $^\circ\text{C}$ |                           |

■ **Device Marking 产品打标**

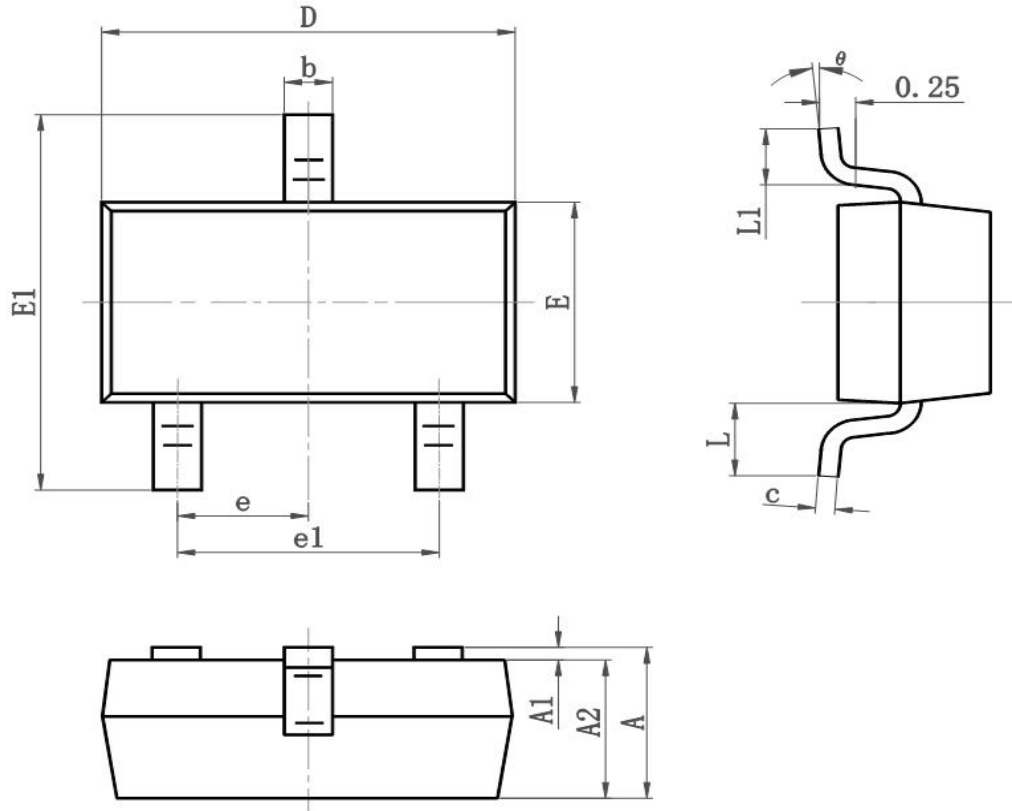
FS432M=432

■ Electrical Characteristics 电特性

( $V_{KA}=V_{REF}$   $I_{KA}=10mA$   $T_a=25^\circ C$  unless otherwise noted 如无特殊说明)

| Characteristic<br>特性参数  | Symbol<br>符号                   | Test Condition<br>测试条件   | Min<br>最小值 | Type<br>典型值 | Max<br>最大值 | Unit<br>单位 |
|---|--------------------------------|--|------------|-------------|------------|------------|
| Reference<br>Input Voltage<br>基准电压  | $V_{REF}$                      | $V_{KA}=V_{REF}$<br>$I_{KA}=10mA$                                      | 1.234      | 1.24        | 1.247      | V          |
|   |                                |  | 1.228      | 1.24        | 1.252      |            |
| Deviation of reference Input<br>Voltage Over temperature<br>标准温度内基准电压偏差                 | $\Delta V_{REF}/\Delta T$      | $V_{KA}=V_{REF}$<br>$I_{KA}=10mA$<br>$0 \sim 70^\circ C$               |            | 10          | 25         | mV         |
| Ratio of Change in Reference Input<br>Voltage Change in Cathode Voltage<br>阴极电压与基准电压变化比 | $\Delta V_{REF}/\Delta V_{KA}$ | $I_{KA}=10mA$<br>$\Delta V_{KA}=18V \sim V_{REF}$                      |            | -1          | -2.7       | mV/V       |
| Reference Input Current<br>基准电流   | $I_{REF}$                      | $I_{KA}=10mA$<br>$R1=10k \Omega, R2=\infty$                            |            | 0.25        | 0.5        | $\mu A$    |
| Deviation of Reference Input Current<br>Over Full Temperature Range<br>标准温度内基准电流偏差      | $\Delta I_{REF}/\Delta T$      | $I_{KA}=10mA$<br>$R1=10k \Omega, R2=\infty$<br>$T_A=0 \sim 70^\circ C$ |            | 0.05        | 0.3        | $\mu A$    |
| Minimum Cathode Current<br>for Regulation<br>最小阴极电流                                     | $I_{KA(MIN)}$                  | $V_{KA}=V_{REF}$   |            | 60          | 80         | mA         |
| Off-state Cathode Current<br>关闭状态阴极电流   | $I_{KA(OFF)}$                  | $V_{KA}=18V$<br>$V_{REF}=0V$   |            | 0.04        | 0.5        | $\mu A$    |
| Dynamic Impedance<br>输出阻抗   | $Z_{KA}$                       | $V_{KA}=V_{REF}$<br>$I_{KA}=1 \sim 100mA$<br>$f \leq 1kHz$             |            | 0.2         | 0.4        | $\Omega$   |

■SOT-23 Dimension 外形封装尺寸



| Symbol   | Dimensions In Millimeters |           | Dimensions In Inches |           |
|----------|---------------------------|-----------|----------------------|-----------|
|          | Min                       | Max       | Min                  | Max       |
| A        | 0.900                     | 1.150     | 0.035                | 0.045     |
| A1       | 0.000                     | 0.100     | 0.000                | 0.004     |
| A2       | 0.900                     | 1.050     | 0.035                | 0.041     |
| b        | 0.300                     | 0.500     | 0.012                | 0.020     |
| c        | 0.080                     | 0.150     | 0.003                | 0.006     |
| D        | 2.800                     | 3.000     | 0.110                | 0.118     |
| E        | 1.200                     | 1.400     | 0.050                | 0.055     |
| E1       | 2.250                     | 2.550     | 0.089                | 0.100     |
| e        | 0.900                     | 1.00      | 0.035                | 0.039     |
| e1       | 1.800                     | 2.000     | 0.071                | 0.079     |
| L        | 0.500                     | 0.600     | 0.020                | 0.024     |
| L1       | 0.300                     | 0.500     | 0.012                | 0.020     |
| $\theta$ | $0^\circ$                 | $8^\circ$ | $0^\circ$            | $8^\circ$ |